

Profile for an
Associate Minister
in the North Dartmoor Parishes



Communicating the Good News of Jesus and caring for the vulnerable, our communities and the wider creation.

Associate Minister in the North Dartmoor Parishes

We are looking for an Associate Minister (half time or on a house for duty basis*) to join the ministry team of the North Dartmoor Parishes.

The team shares responsibilities across the benefice of ten parishes, and the Associate Minister will live in Moretonhampstead Rectory, with pastoral oversight of the moorland town of Moretonhampstead and the Dartmoor villages of Lustleigh, Manaton and North Bovey. Each parish has a fine historic church, a local pub and its own community events and organisations.

The team is made up of a rector-designate who lives in Chagford, a number of retired clergy, five licenced lay ministers, two administrators, and some lay worship leaders, all of whom meet together on a monthly basis.

Full details of all the parishes and of the team can be found on the website:

www.northdartmoorparishes.co.uk

For more details, please be in touch with the Rt. Reverend Nick McKinnel, Priest in Charge of the NDP:

07773 363330

Nick.mckinnel@gmail.com

Application Form

Please contact The Ven. Douglas Dettmer, Archdeacon of Totnes for an application form:

(01626) 832064

ADT@exeter.anglican.org

Closing Date for Applications: 20th October 2025

Interviews: 6th November 2025

*In the Diocese of Exeter, the expectations of a 0.5 post are Sundays (up to three services) and a minimum of three days per week; six Sundays off per annum, not less than six weeks holiday; 0.5 stipend and house.

For a house for duty post, they are Sundays (up to two services) and two days per week; nine Sundays off per annum; not less than six weeks holiday; no stipend, only the house.

THE PERSON

We are praying for someone who:

- Understands and enjoys rural and community life
- Loves the Lord, people and the good news of Christ
- Offers thoughtful and biblical preaching
- Values ministering within a team, lay and ordained
- Appreciates the individual identity of each parish while encouraging helpful ways of working together
- Has a gentle style of leadership, expressed by consulting and serving

THE ROLE

Particular features of this role include:

- Leading worship in a variety of expressions
- Helping to nurture the spiritual life of the parishes, especially in Lustleigh, Manaton, Moretonhampstead and North Bovey
- Taking part in the life and events of the local community
- Developing contacts with Moretonhampstead Primary School and the families of children who attend
- Taking occasional offices as the need arises

Some Observations

The North Dartmoor Parishes is a new multi-parish benefice being formed out of parishes grouped around Chagford (the Whiddon group), and Moretonhampstead (the Moreton group), with the rector living in Chagford and a part-time post in Moretonhampstead. There is also a parsonage house in South Tawton, currently let out to tenants by the Diocese.

While some of the churches are stronger than others, all have warm-hearted and welcoming congregations. They vary a little in their liturgical traditions but on the whole services are straightforward, unfussy and much appreciated, with friendly gatherings for refreshment afterwards. Churchwardens and lay worship leaders ensure a full pattern of services.

Current priorities in our church life include developing the life of the benefice; deepening discipleship; work with schools, families and young people; strengthening local leadership; and encouraging outward looking, resilient congregations.

All of the churches are well integrated in their communities with many of the congregation having leading roles in their village. Most parishioners feel it is "our church" even when not attending, and the buildings are regularly used for concerts, lectures and other events.

The current Priest-in-Charge, (Rector Designate) Nick McKinnel, is on a 2-year (renewable) licence to oversee the pastoral organisation and develop the team. The intention is to avoid a long vacancy by giving extended notice of his plans to retire.

Administration is well looked after by two administrators, Heather and Maria.

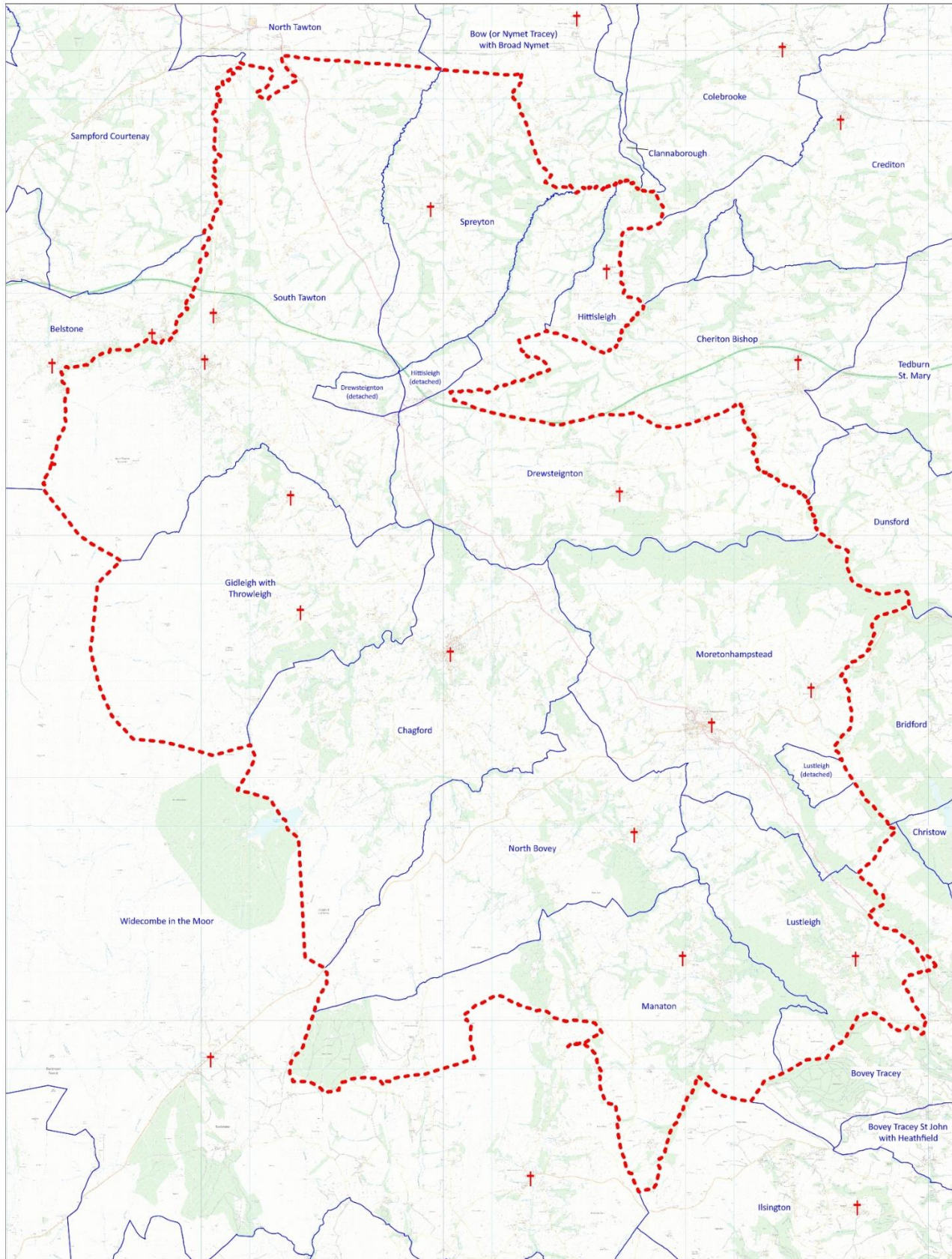
The Rectory

The Rectory is a modern four-bedroom house in Moretonhampstead, with a southerly outlook over the town towards high moorland and Haytor on the horizon. On the ground floor the front door opens to a hallway with a study and a cloakroom, with a door leading through to the main downstairs living area, comprising a dining room/sitting room/kitchen leading off one another. There are also two bedrooms, one with an en-suite, and a separate shower. The kitchen has a separate utility area with an external door leading to the front driveway. The sitting room has a sunny southern aspect with floor to ceiling glass patio doors leading onto a small, sheltered patio and seating area, and a step down to the garden. Upstairs there are two bedrooms with hand basins, and a bathroom with a separate shower.

Externally, the front of the house consists of a driveway with room for adjacent parking, and a garage. The garden surrounds the other three sides of the house and has a small vegetable plot, a spring garden, two apple trees and a strip of lawn. The southern and easterly walls of the house are extensively covered by the attractive foliage of Virginia creeper during the warmer months of the year. A combination of mature hedgerows, shrubs and trees ensure a good degree of privacy.



Parishes of Chagford, Drewsteignton, Gidleigh with Throwleigh, Hittisleigh, Lustleigh, Manaton, Moretonhampstead, North Bovey, South Tawton, and Spreyton



This map was compiled for the Diocese of Exeter by Alistair Sutherland in July 2024 with digital data from Field Dynamics. It contains parish data supplied by the Commissioners of the Church of England, church location data from A Church Near You, and Ordnance Survey data reproduced with the permission of Ordnance Survey on behalf of HMSO. © Crown copyright and database right 2024. All rights reserved. Ordnance Survey licences nos 100040148 and 100019918. Please note that some legal parish names may be abbreviated here for clarity.